



Artist **PROFILE**

Katarina Sokolova

COUNTRY: Ukraine
CLIENT LIST: Freelance (private commissions)



Katarina began batik and graphics classes at the age of six.

Graduating from the Art Union of Painters of Ukraine in 2002, she has been working as a CG artist for five years and has had work printed in the Exposé and Exotique series of books. She has also held a series of exhibitions of her work in the Ukraine.

katarinasokolova.com

DVD Assets

The files you need are on your DVD

FOLDERS: Screenshots, PSDs

FILES: Eye_final_image.tif

SOFTWARE: Painter X (demo)

Painter
PAINTING FANTASY EYES

Eyes are so expressive, showing character, mood and beauty. **Katarina Sokolova** explains how to make them look natural

In order to paint a realistic-looking eye it is necessary to understand its form. The human eye is a sphere, covered by upper and lower eyelids. If you imagine the parallel lines passing along the eyes, that will make it easier for you to understand how to construct your sketch correctly.

Eyes come in many diverse forms and will be different depending on the facial type and race of the person. The upper eyelid is wider than the lower one because of its function – to cover and

protect the eye. While painting the upper eyelid, you can add expression and emotion to your character. Half-closed eyelids convey languor and allure; squinted eyes look sly or playful.

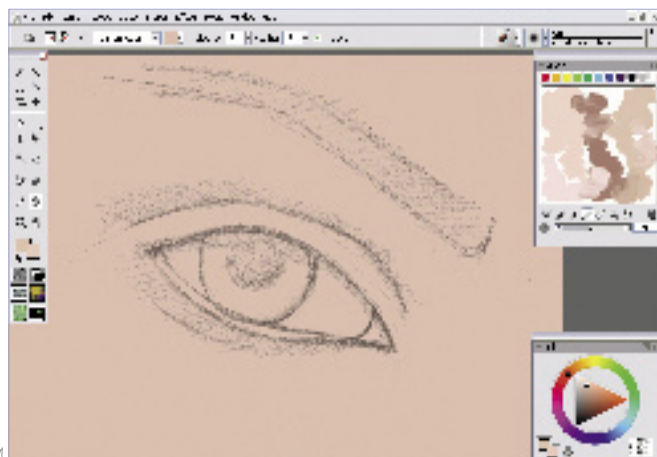
Don't forget that there's also a lower eyelid – if it's missed, the eye will look strange and unrealistic. In the inside corner of the eye there's a tear duct. Again, eyes look odd without this.

I can't stress enough the significance of detailing the iris. This part is responsible for the volume and expressiveness of the eye as well as its colour, of course.

Personally, I find it very important to draw eyelashes. I always make them slightly unreal, too long or of unusual colours. Sometimes I put sparkles on them, or add tears trickling down. This is always a final step in my portraits.

During this workshop I'm going to look at all aspects of painting an eye, including the eyelashes and make-up. I like to paint fantasy portraits of beautiful girls and I never leave their eyes without make-up. Remember, though: the make-up can be rich but it shouldn't be vulgar.

Quick technique Painting fantasy eyes

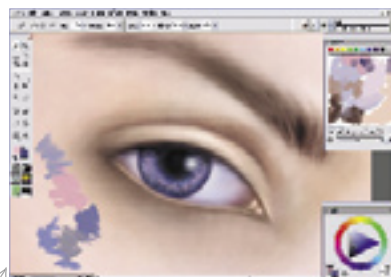


1 First sketch
First I make a sketch of a simple eye, just the basic shape really. It needs to show the lower eyelid and the tear duct. Don't forget that part of the iris is hidden behind the upper and lower eyelid. Like the eyeball, both the iris and the pupil must be absolutely round. Slightly shade the corners of the eye and put a shadow above the upper eyelid. Next, I shade the lower eyelid to give volume to the eye. Finally, create the shape of the eyebrow. Scan the sketch and put it in multiply layer mode, then pick a first colour – the colour of the skin. I've chosen a beige-lilac tone for this painting.

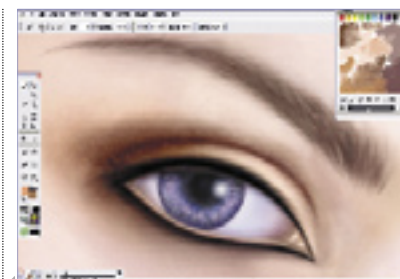
2 Shadows and highlights
It's time to start work with shadows and highlights. Pick a lighter, warmer beige-pink colour for highlighting the inside part of the lower and upper eyelid. I'm using soft brushes for this, and I use the same brush but with a bigger diameter to add highlights under the eyebrow, from the inside of the eye. After you've done the highlights, start to add shadows.

PRO SECRETS
Eyelash secrets
Paint eyelashes on two to three layers; this way you can add density and curl them. It will also add volume. On the first layer, paint the shorter eyelashes using a soft brush with high transparency. Paint thinner eyelashes of varying lengths on the second layer. On the third layer, use a very small brush with Opacity of about 35 to 45 per cent. Paint little curled eyelashes to bring life to the eyes.

I start by shading the lower eyelid according to the sketch and then put shadows on the upper eyelid. I then place shadows and highlights further along both lids to add volume. I paint the tear duct with some light beige strokes.



3 Detailing the iris
Painting the eyeball with different opacity soft brushes, I decide on a light bluish-grey tint. Keep in mind that the most convex part of the eyeball must be the lightest. I add some brush strokes (transparency of five per cent) with a tint of the primary skin colour on the shaded sites of the eyeball on the new Colour Mode layer. Then I start to paint the iris. I pick a random dark blue colour (a little bit darker than necessary) and paint the circle on the eyeball. Then, on top of that, put a lighter blue colour that will leave a narrow dark edge. I paint the pupil in the centre of the iris, and add a highlight to it; the placement of the highlight depends on the location of the light source in the image. Next, I put a dark stroke on the iris under the upper eyelid, then start adding detail. I add small strokes and specks using a soft brush with grey-blue, cold pink and bright blue hues.



4 Add make-up
Pick a warm, beige-pink colour and paint it between the upper eyelid and eye socket. Add strokes of a warm chocolate colour on the outside of the upper eyelid, then put a warm beige stroke on the whole area under the brow. Next, I make the area under the lower eyelid a little lighter. Using a soft brush with 20 per cent opacity, paint a black line along the outer edges of the lower and upper lids – it should thicken towards the external corner. Increase the brush size, set the opacity at 15 per cent and paint along the contour of the upper and lower lids.

5 Eyelashes
I paint the eyelashes with quick strokes using a soft brush with opacity no greater than 20 per cent. After that, I add longer and darker lashes using smaller brushes with 25 to 35 per cent opacity. Eyelashes should be denser at the external edge of the eye. I paint them curled up and about twice as long as they are in real life, and I like to paint bottom lashes almost as long as the top ones to add mood. Finally, I add some sparkles with the Airbrush set to Variable Splatter in a non-saturated pink.

